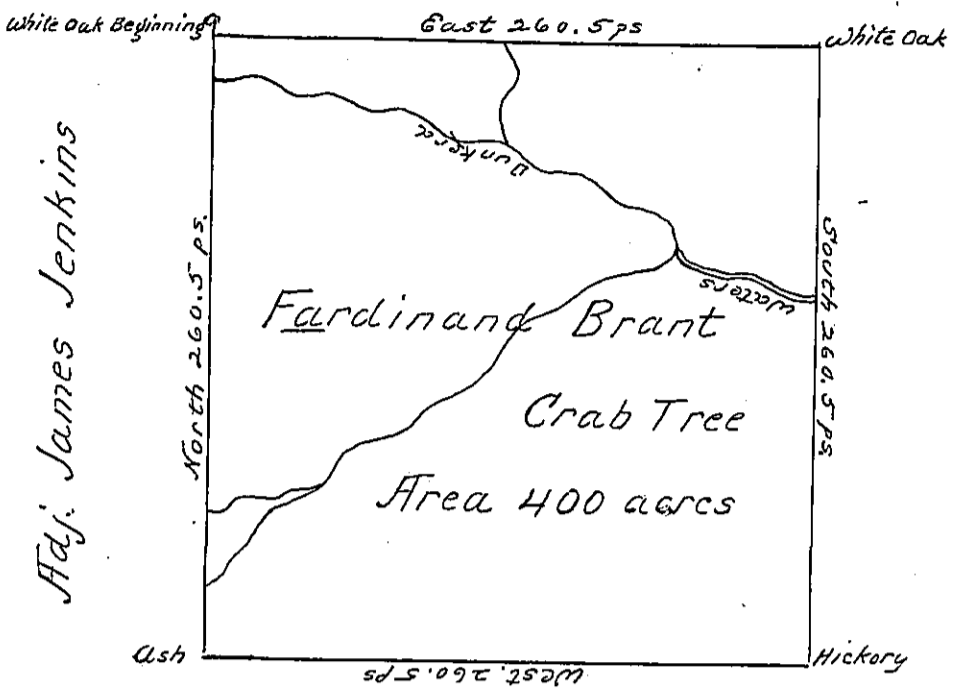


Adj. Chas. Michel



The above is Draught of a Survey made the
 2d. Day of Feb. 1784. In pursuance of a warrant granted
 to Ferdinand Brant ^{dated the 25th Day of Oct. 1784} Situate on the waters of Dunkard
 Creek in Washington County called Crabtree Con-
 taining four Hundred acres with usual allowance of
 6 percent for Roads

Jno. Hoge Dist.

To John Lukens Esqr. Survr. Genl. }

IN TESTIMONY that the above is a copy of the original remaining on file in
 the Department of Internal Affairs of Pennsylvania, made
 conformably to an Act of Assembly approved the 16th day of
 February, 1833, I have hereunto set my Hand and caused
 the Seal of said Department to be affixed at Harrisburg,
 this fourth day of November 1902

James W. Latta
 Secretary of Internal Affairs.